



# TVN 200-300



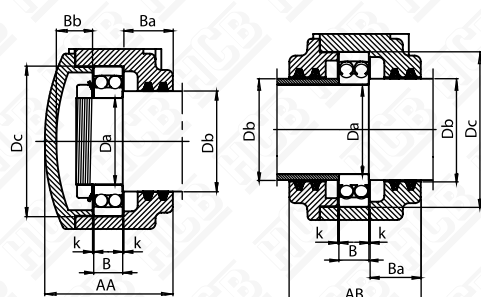
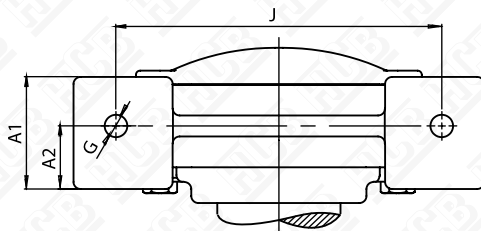
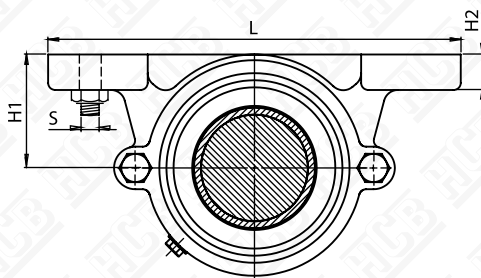


Housing	Breaking loads						
	Size	P <sub>55°</sub>	P <sub>90°</sub>	P <sub>120°</sub>	P <sub>150°</sub>	P <sub>180°</sub>	P <sub>a</sub>
		kN	kN	kN	kN	kN	kN
TVN 204		130	55	29	25	30	10
TVN 205		140	55	29	25	30	10
TVN 206		210	68	48	42	50	16
TVN 207		210	98	56	48	58	16
TVN 208		280	130	79	69	82	30
TVN 209		280	150	90	80	95	30
TVN 210		280	150	90	80	95	30
TVN 211		360	250	135	115	140	30
TVN 212		360	280	135	115	140	30
TVN 213		420	280	160	140	170	48
TVN 214		420	280	160	140	170	48
TVN 215		580	290	180	160	190	48
TVN 216		580	290	180	160	190	48
TVN 217		580	290	180	160	190	48
TVN 218		630	390	240	210	250	75
TVN 305		210	68	48	42	50	16
TVN 306		210	98	56	48	58	16
TVN 307		280	130	79	69	82	30
TVN 308		280	150	90	80	95	30
TVN 309		360	250	135	115	140	30
TVN 310		360	250	135	115	140	30
TVN 311		420	280	160	140	170	48
TVN 312		420	280	160	140	170	48
TVN 313		580	290	180	160	190	48
TVN 314		580	290	180	160	190	48
TVN 315		630	390	240	210	250	75



TVN 200

SHAFT		HOUSING FOR SHAFT END	HOUSING FOR THROUGH SHAFT	BEARING	SEALS
Da	Db				
20	25	TVN 204 A	TVN 204 B	1204	FS 190
25	30	TVN 205 A	TVN 205 B	1205	FS 190
30	35	TVN 206 A	TVN 206 B	1206	FS 190
35	45	TVN 207 A	TVN 207 B	1207	FS 190
40	50	TVN 208 A	TVN 208 B	1208	FS 260
45	55	TVN 209 A	TVN 209 B	1209	FS 260
50	60	TVN 210 A	TVN 210 B	1210	FS 260
55	65	TVN 211 A	TVN 211 B	1211	FS 260
60	70	TVN 212 A	TVN 212 B	1212	FS 330
65	75	TVN 213 A	TVN 213 B	1213	FS 330
70	80	TVN 214 A	TVN 214 B	1214	FS 330
75	85	TVN 215 A	TVN 215 B	1215	FS 330
80	90	TVN 216 A	TVN 216 B	1216	FS 330
85	95	TVN 217 A	TVN 217 B	1217	FS 330
90	100	TVN 218 A	TVN 218 B	1218	FS 330



TVN - A

TVN - B

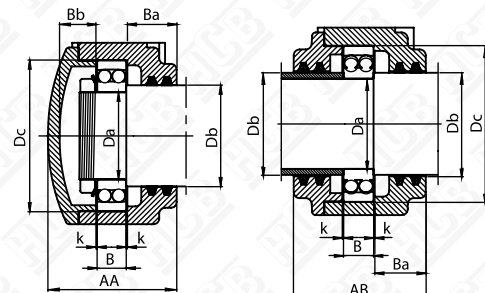
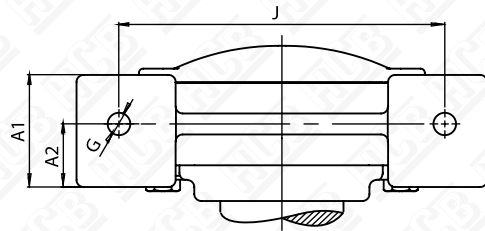
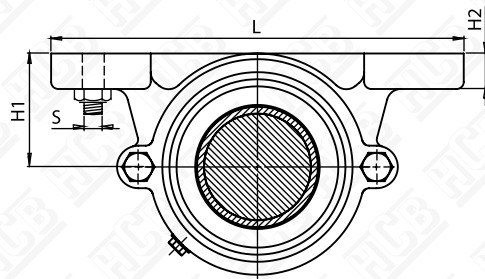
TVN 200



HOUSING	DIMENSIONS														
	Dc	B	L	J	H <sub>1</sub>	H <sub>2</sub>	A1	A2	G	AA	AB	Ba	Bb	k	Kg
TVN 204	47	14	150	110	35	14	45	25	12	62	68	21,5	17	1	1,2
TVN 205	52	15	170	130	40	16	45	25	12	63	71	22,5	17,5	1	1,4
TVN 206	62	16	190	150	50	16	52	30	12	71	76	25	21	1	2,2
TVN 207	72	17	190	150	50	18	52	30	12	77	78	25,5	23	1	2,6
TVN 208	80	18	210	170	60	18	60	35	12	86	92	30,5	27,5	1	3,7
TVN 209	85	19	210	170	60	20	60	35	12	87	92	30	29	1	4
TVN 210	90	20	210	170	60	20	60	35	12	90	94	32,5	29,5	1	4,2
TVN 211	100	21	270	210	70	23	70	40	16	95	100	32,5	31	1	6,2
TVN 212	110	22	270	210	70	23	70	40	16	102	105	36	32	1	6,7
TVN 213	120	23	290	230	80	25	80	45	16	110	115	36,5	35	1	9,1
TVN 214	125	24	290	230	80	25	80	45	16	111	115	37	36,5	1	9,4
TVN 215	130	25	290	230	80	25	80	45	16	115	117	38,5	38	1	9,9
TVN 216	140	26	330	260	95	28	90	50	20	122	127	42,5	38	1	13,5
TVN 217	150	28	330	260	95	28	90	50	20	126	129	43	38,5	1	14
TVN 218	160	30	360	290	100	30	100	55	20	136	139	46	41,5	1	18,5



SHAFT		HOUSING FOR SHAFT END	HOUSING FOR THROUGH SHAFT	BEARING	SEALS
Da	Db				
25	30	TVN 305 A	TVN 305 B	1305	FS 190
				21305	
30	35	TVN 306 A	TVN 306 B	1306	FS 190
				21306	
35	45	TVN 307 A	TVN 307 B	1307	FS 190
				21307	
40	50	TVN 308 A	TVN 308 B	1308	FS 260
				21308	
45	55	TVN 309 A	TVN 309 B	1309	FS 260
				21309	
50	60	TVN 310 A	TVN 310 B	1310	FS 260
				21310	
55	65	TVN 311 A	TVN 311 B	1311	FS 260
				21311	
60	70	TVN 312 A	TVN 312 B	1312	FS 330
				21312	
65	75	TVN 313 A	TVN 313 B	1313	FS 330
				21313	
70	80	TVN 314 A	TVN 314 B	1314	FS 330
				21314	
75	85	TVN 315 A	TVN 315 B	1315	FS 330
				21315	



TVN - A

TVN - B

TVN 300



HOUSING	DIMENSIONS														
	Dc	B	L	J	H <sub>1</sub>	H <sub>2</sub>	A1	A2	G	AA	AB	Ba	Bb	k	Kg
TVN 305	62	17	190	150	50	16	52	30	12	71	76	26,5	23	1	2,3
TVN 306	72	19	190	150	50	18	52	30	12	77	78	27,5	25	1	2,6
TVN 307	80	21	210	170	60	18	60	35	12	86	92	31,5	28	1	3,9
TVN 308	90	23	210	170	60	20	60	35	12	90	94	32,5	29	1	4,2
TVN 309	100	25	270	210	70	23	70	40	16	95	100	32,5	31	1	6,3
TVN 310	110	27	270	210	70	23	70	40	16	102	105	36,5	32	1	6,9
TVN 311	120	29	290	230	80	25	80	45	16	110	115	37,5	36	1	9,3
TVN 312	130	31	290	230	80	25	80	45	16	115	117	38,5	38	1	10
TVN 313	140	33	330	260	95	28	90	50	20	122	127	42,5	38	1	13,5
TVN 314	150	35	330	260	95	28	90	50	20	126	129	43,5	39	1	14
TVN 315	160	37	360	290	100	30	100	55	20	136	139	47,5	43	1	18,5